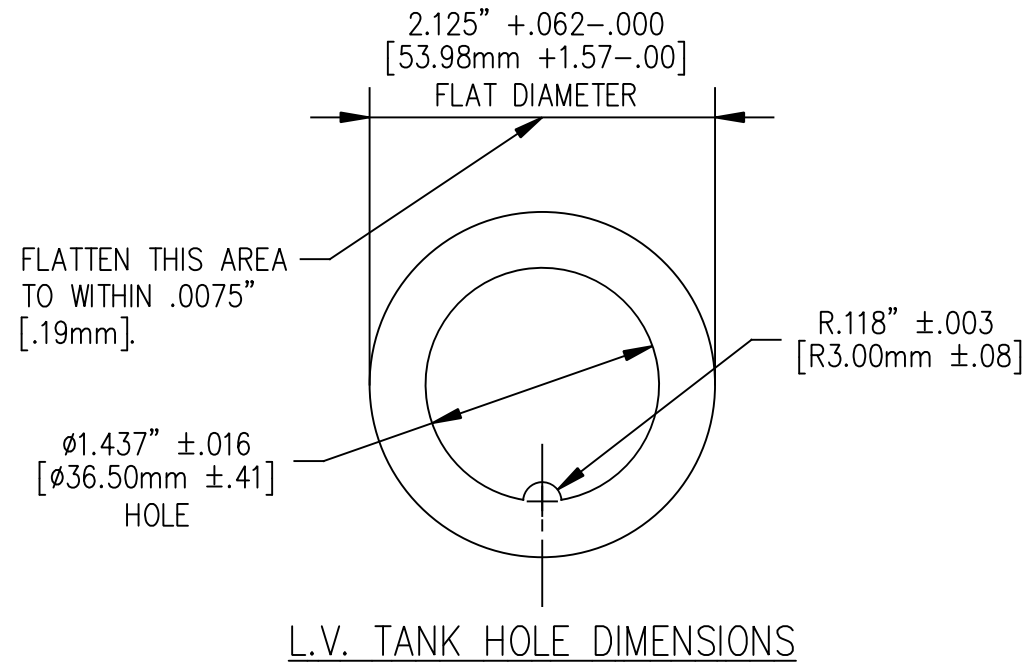
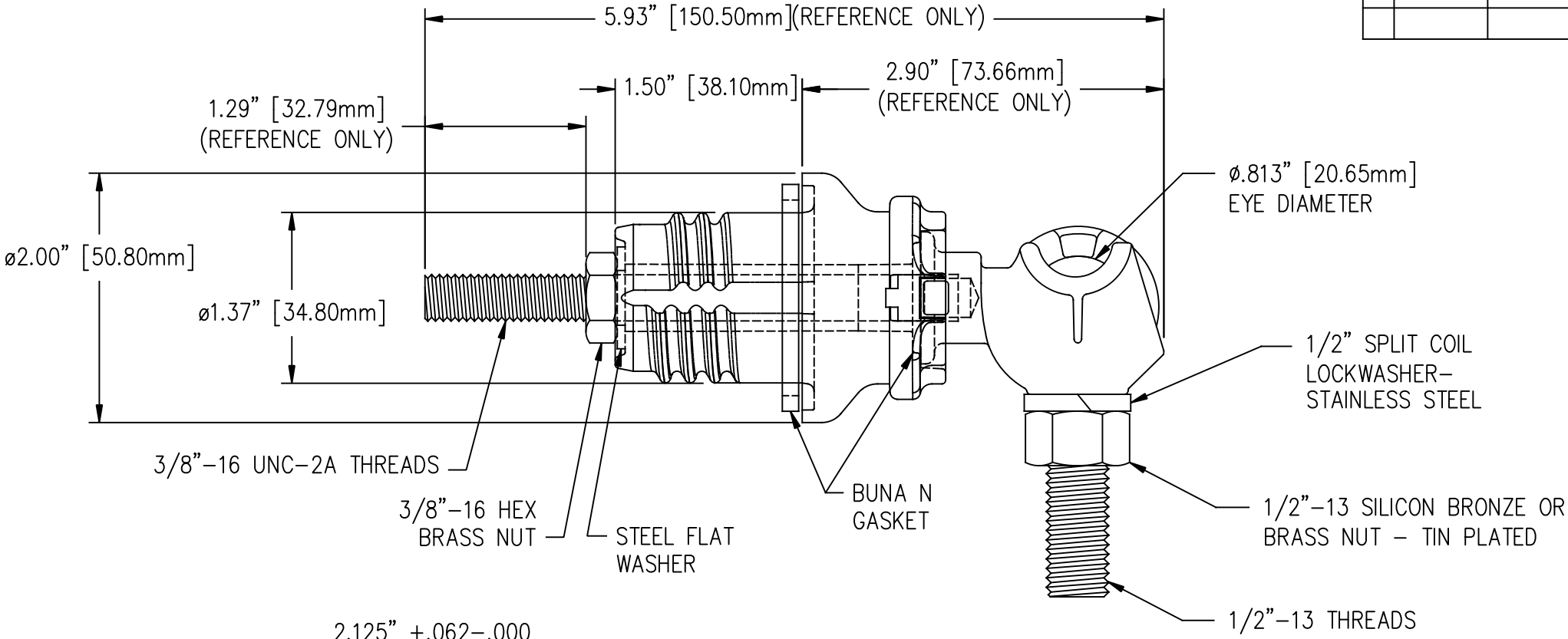


REVISIONS					
NO.	DATE	ECN #	REMARKS	BY	APPD.



MATERIAL:
 STUD - COPPER CDA 11000
 BODY - CDA 84400 TIN PLATED
 EYEBOLT - CDA 95500 TIN PLATED

TOLERANCES (EXCEPT AS NOTED) DECIMAL ± .032" / .8mm FRACTIONAL ± ANGULAR ± 2°		H-J ENTERPRISES, INC. 3010 HIGH RIDGE BLVD., HIGH RIDGE, MO. 63049 USA PHONE 1-636-677-3421 FAX 1-636-376-1915		
		25 KVA L.V. BUSHING ASSEMBLY NON-PORCELAIN INSULATOR		
		MATERIAL (SEE ABOVE)		
		CHK'D	APP'D	DRAWING NO. AS1582-001
DRAWN BY CJT	DATE 7-21-08	SCALE N.T.S.		